

Jinx

A Tale of Twin Witches

created by
JOY BURAN & NOELLE MELODY



LOGLINE



JINX IS A MIDDLE GRADE COMING-OF-AGE TALE ABOUT A PAIR OF POWERFUL BUT RECKLESS TWIN WITCHES FIGHTING TO BE SEEN AS INDIVIDUALS IN A MAGICAL WORLD WITH A MYSTERIOUS PAST AND AN EVIL FORCE THREATENING TO DESTROY ITS FUTURE.

STORY SUMMARY

JINX TAKES PLACE IN A WITCHY WORLD, FULL OF TRICKSTER FAERIES, GHOST CATS, AND KOOKY CHIMERAS, YET A COUPLE OF TEENAGE TWINS SEEM TO BE GETTING THE MOST SIDE-EYE. WAIT, WHAT?

LITHA AND YULE ARE THE ONLY TWIN WITCHES IN PUMPKIN GROVE, AND FOR THEM, CARVING OUT THEIR OWN IDENTITIES IN MAGIC MIDDLE SCHOOL IS TWICE AS CHALLENGING AS CONTROLLING THEIR SUPER-DUPER POWERS THAT GET EVEN SUPER-DUPERER ONCE THEY TURN 13. TWIN MAGIC IS REAL!

BUT THIS COZY FANTASY IS DISRUPTED WHEN LITHA AND YULE'S POWER SURGE ACCIDENTALLY UNLEASHES A BANISHED BIG BAD INTENT ON STEALING ALL THE POWER IN THE WORLD. THE SISTERS MUST WORK TOGETHER TO DEFEAT HER, WHICH BECOMES MORE DIFFICULT WHEN THEY LEARN SHE'S GOT SOME TWIN MAGIC OF HER OWN.

CAN LITHA AND YULE BATTLE THIS EVIL FORCE AND THE TWIN STIGMA THAT COMES ALONG WITH IT BEFORE IT TEARS THEM APART FOREVER?





OUTLINE

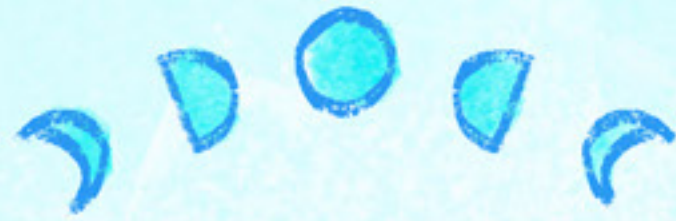
TWIN WITCHES LITHA AND YULE ARE ABOUT TO TURN 13, AND IN THE MAGICAL WORLD OF ELSEWITHER, THAT'S THE AGE WHEN ALL WITCHES COME INTO THEIR FULL POWER. BUT ON THE EVE OF THEIR BIRTHDAY, A DISAGREEMENT OVER THEIR PARTY GETS A LITTLE OUT OF HAND. YULE HAS BEEN METICULOUSLY PLANNING A COZY SÉANCE, WHILE LITHA WOULD RATHER THROW AN IMPROMPTU, ALL-OUT RAGER. TIRED OF SHARING EVERYTHING TOGETHER, YULE THREATENS TO DO HER OWN THING AND THIS MAKES LITHA NUTS. THE TWINS GET SO WORKED UP, THEY WIND UP TELEKINETICALLY RIPPING THE HOUSE IN HALF, SENDING SHOCKWAVES ALL OVER ELSEWITHER, AND UNKNOWINGLY AWAKENING A MALEVOLENT ENTITY THAT WAS BANISHED LONG AGO. TO PREVENT FURTHER DESTRUCTION, THE HEAD WITCHES AT PUMPKIN GROVE PUBLIC CHARM SCHOOL DEMAND THAT LITHA AND YULE ARE SEPARATED INTO DIFFERENT COVENS FOR THE FIRST TIME IN THEIR LIVES. ON TOP OF EVERYTHING ELSE, THEIR PARTY IS CANCELED!

LITHA IS TERRIFIED AT THE PROSPECT OF BEING SEPARATED. SHE'S ALWAYS EMBRACED HER TWINDOM AND WANTED TO GO INTO THIS YEAR AS A DYNAMIC DUO. MEANWHILE, YULE SEES THIS AS AN OPPORTUNITY TO FINALLY STEP INTO HER INDIVIDUALITY.

THE SEPARATION DOESN'T PLAY OUT AS EITHER TWIN EXPECTS

LITHA'S SOCIAL SKILLS QUICKLY ALLOW HER TO SHINE ON HER OWN AND MAKE TONS OF FRIENDS WHILE YULE IS SURPRISINGLY LONELY AND LOST. SHE FEELS LIKE SHE'S IN LITHA'S SHADOW AND CAN'T FOCUS ON HER STUDIES. AT THE SUGGESTION OF HER NEW TEACHER, YULE PUTS HER ENERGY TOWARDS TUTORING HENSON, A BOY IN HER COVEN BORN WITH NO POWERS AT ALL, WHO MUST PRACTICE "LEARNED MAGIC". YULE ALWAYS FELT SORRY FOR HENSON WITH HIS TINCTURES AND TALISMANS, BUT SHE NOW WELCOMES HIS FRIENDSHIP. LITHA QUICKLY DEVELOPS A BIT OF A CRUSH ON HENSON AND BECOMES JEALOUS OF THE TIME YULE GETS TO SPEND WITH HIM AFTER SCHOOL.

RUMORS START SPREADING ABOUT THE TWINS AND IT SEEMS THAT THERE WAS MORE TO THE DECISION OF SEPARATING THEM THAN THEIR HOUSE-SPLITTING SHENANIGANS. IT TURNS OUT THAT IN THEIR QUIET LITTLE TOWN OF PUMPKIN GROVE, TWINS ARE REGARDED WITH SUPERSTITION AND FEAR! EVEN THEIR FRIENDS ARE LOOKING AT THEM DIFFERENTLY, AND THEY DON'T KNOW WHY.



WHERE IS ALL OF THIS HOSTILITY COMING FROM? LITHA AND YULE'S PARENTS HAVE ALWAYS FOUGHT TO PROTECT THEM FROM THIS NASTY STEREOTYPE, BUT NOW THAT THEY'RE 13 AND DANGEROUSLY POWERFUL, IT'S COMING OUT IN FULL FORCE. THEIR FATHER, PIERCE, ASSURES EVERYONE IT'S NOT AT ALL A SIGN THAT THE TWINS ARE HARBINGERS OF ANY KIND OF APOCALYPSE, BUT THEIR MOTHER, GEENA, IS NOT SO SURE. SHE'S BEEN HAVING TERRIFYING VISIONS OF HER DAUGHTERS IN DANGER FOR MONTHS, AND AS WE SOON DISCOVER, THE TWINS DID MORE THAN JUST TEAR THE HOUSE APART... THOSE SHOCKWAVES CREATED A RIFT JUST WIDE ENOUGH FOR THAT EVIL FORCE TO SLIP BACK INTO THEIR UNIVERSE. GEENA IS AFRAID IF SHE TELLS THEM THE TRUTH, HER VISIONS WILL COME TO PASS.

LITHA AND YULE LEARN THE STORY OF CHAOS AND COSMOS

TO GET THE REAL TEA, LITHA AND YULE PAY A VISIT TO VIOLA, THEIR MOST TRUSTED ADULT MENTOR AND THE OWNER OF THE WITCHES BREW APOTHECARY AND CAFE, THEIR FAVORITE AFTER-SCHOOL HANGOUT. AFTER MUCH BADGERING, VIOLA TELLS THEM A STORY FROM ELSEWITHER'S BURIED PAST...

CHAOS AND COSMOS WERE ONCE THE MOST POWERFUL WITCHES IN ELSEWITHER, BUT CHAOS GREW GREEDY FOR HER TWIN'S POWER. RATHER THAN BE HALF OF A WHOLE, SHE DECIDED TO STEAL IT FOR HERSELF AND BECOME TWICE AS POWERFUL. IT WAS THE DARKEST MAGIC EVER PERFORMED IN ELSEWITHER AND THEIR BATTLE ULTIMATELY RESULTED IN CHAOS' BANISHMENT AND COSMOS' DISAPPEARANCE.

AS LITHA AND YULE DIG DEEPER, IT BECOMES CLEAR TO US THAT CHAOS IS THE EVIL ENTITY THAT THE TWINS UNLEASHED THE NIGHT BEFORE THEIR BIRTHDAY. SHE BEGINS APPEARING IN DIFFERENT FORMS ALL OVER TOWN, RUNNING AMOK AND DEVISING A SCHEME TO TAKE ALL THE POWER IN ELSEWITHER. BUT ONCE SHE FINDS OUT LITHA AND YULE HAVE BEEN DIGGING UP DIRT ON HER, CHAOS BECOMES FIXATED ON ONE THING: BREAKING UP THE TWINS FOR GOOD.

HOWEVER, CHAOS ISN'T THE ONLY OUTSIDER TRYING TO LURE THEM IN - A WISE OLD WITCH KEEPS CALLING LITHA AND YULE INTO THE WOODS AND TEACHING THEM HOW TO WORK TOGETHER TO CONTROL THEIR POWERS, SOMETHING THE HEAD WITCHES AT CHARM SCHOOL HAVE EXPRESSLY FORBIDDEN THEM FROM DOING.



WEIRD THINGS BEGIN TO HAPPEN IN PUMPKIN GROVE

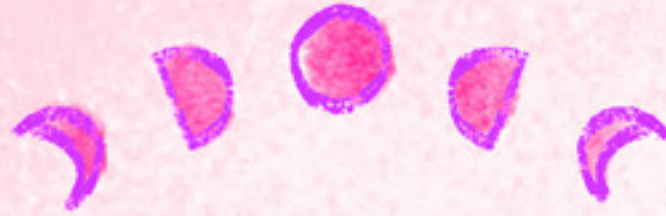
CRYSTAL BALLS STOP WORKING. ANIMAL FAMILIARS ARE DISAPPEARING. MAGIC OUTAGES ABOUND. GEENA KNOWS EXACTLY WHAT'S GOING ON HERE: CHAOS IS BACK! BUT NO ONE ELSE WILL EVEN ACKNOWLEDGE THIS POSSIBILITY. **THEY ALL BLAME LITHA AND YULE'S POWER-SURGE, AND THAT'S JUST WHAT CHAOS IS BANKING ON.**

WHEN BOTH LITHA AND YULE MANAGE TO REJECT CHAOS' INDIVIDUAL OFFERS OF UNLIMITED POWER, CHAOS ATTACKS THE TOWN, DISGUISED AS THE TWINS THEMSELVES! YULE TRIES TO FIGHT HER ALONE AND LOSES. **CHAOS TAKES AWAY YULE'S POWER, OFFERING TO GIVE IT BACK ONLY IF SHE WILL ACCEPT LITHA'S AS WELL. YULE REFUSES!** SHE WOULD NEVER STOOP SO LOW AS TO TAKE HER OWN SISTER'S POWER LIKE CHAOS DID. CHAOS GOES BERSERK AND FLEES, LEAVING YULE COMPLETELY BLINDSIDED BY LOSING ALL OF HER POWER. **HENSON IS DETERMINED TO HELP YULE GET BACK ON HER SPELL GAME AND LEARN MAGIC ALL OVER AGAIN. IT'S NOT EASY FOR HER – YULE ISN'T GOOD AT BEING BAD AT THINGS. LITHA TRIES TO BE THERE FOR HER, BUT FINDS HERSELF BECOMING MORE POWERFUL AND HIDING IT FROM YULE.**

CHAOS APPROACHES LITHA, ENCOURAGING HER TO USE HER NEW POWER. SHE CAN'T HELP RELATING TO CHAOS' PLAYFUL RECKLESSNESS AND COMPELS CHAOS TO TELL HER ORIGIN STORY FROM HER OWN PERSPECTIVE: CHAOS WAS TERRIBLY NEGLECTED AS A CHILD AND WASN'T RAISED TO BELIEVE SHE HAD ANY INTRINSIC VALUE BEYOND HOW POWERFUL SHE COULD BECOME. ALL SHE REALLY WANTED WAS TO BE LOVED – ESPECIALLY BY HER SISTER – BUT SINCE THAT'S NO LONGER AN OPTION, SHE JUST WANTS POWER. LITHA ISN'T FOOLED BY CHAOS'S ATTEMPTS TO LURE HER IN WITH HER SAD STORIES, AND **ONCE CHAOS REALIZES LITHA WILL NOT WILLINGLY COME ON HER POWER QUEST, SHE HYPNOTIZES LITHA INTO AGREEING TO JOIN HER RANKS.**

ELSEWITHER DESCENDS INTO CHAOS

CHAOS BRINGS ON A STORM OF CONFUSION, AND, TO EVERYONE'S SURPRISE, LITHA IS BY HER SIDE! YULE COMES TO HER RESCUE, FOLLOWED BY THEIR PARENTS, GEENA AND PIERCE, WHO TURN OUT TO BE PRETTY SCARY WHEN SOMEBODY MESSES WITH THEIR KIDS. THEY BAND TOGETHER WITH ALL THE WITCHES IN TOWN TO FIGHT CHAOS AND HER MIND-CONTROLLED ARMY, WHO HAVE AMASSED AN INSURMOUNTABLE AMOUNT OF POWER. **AN EPIC BATTLE ENSUES! YULE TRIES DESPERATELY TO CONNECT WITH LITHA, BUT IN HER PANIC AND FEAR, THEIR WIRES KEEP GETTING CROSSED. IT LOOKS LIKE CHAOS IS GOING TO TAKE OVER ELSEWITHER AND TAKE LITHA AWAY!**



REMEMBERING HER LESSONS WITH THE WISE OLD WITCH, YULE FINDS CALM IN THE STORM. SHE ACCEPTS WHO SHE IS NOW AND USES A CHARM FROM HENSON TO TELEPATHICALLY REACH LITHA, WHOSE HEAD IS FILLED WITH CHAOS' LIES. YULE TELLS HER NOTHING CAN EVER COME BETWEEN THEM BECAUSE THEY ARE SISTERS, AND DESPITE THEIR DIFFERENCES, THEY'LL ALWAYS LOVE EACH OTHER NO MATTER WHAT. YULE IS FINALLY ABLE TO GET THROUGH TO LITHA, BREAKING THE SPELL CHAOS HAS OVER HER. UNITED, LITHA AND YULE OVERCOME CHAOS BY COMBINING THEIR UNIQUE POWERS.

TWIN MAGIC FOR THE WIN!

BEFORE THE FINAL BLOW, SOMETHING HAPPENS THAT NO ONE EXPECTS: THE WISE OLD WITCH WHO HAD BEEN TRAINING THE TWINS ALL ALONG REVEALS HER IDENTITY TO BE COSMOS AND APPEARS IN HER TRUE FORM. COSMOS FORGIVES CHAOS FOR EVERYTHING SHE'S DONE AND CHAOS IS ULTIMATELY DEFEATED NOT BY MORE POWER, BUT BY HER SISTER'S LOVE. CHAOS WILL NOW HAVE TO LEARN TO LIVE AS A WITCH WITH NO POWER, JUST LIKE YULE AND HENSON, BUT SHE WON'T HAVE TO DO IT ALONE. THE WHOLE TOWN WITNESSES THIS SHOWDOWN AND FINALLY RECOGNIZES LITHA AND YULE AS THE HEROES THEY ARE.

BALANCE IS RESTORED AS LITHA AND YULE FINALLY LEARN HOW TO WORK TOGETHER, USING BOTH MAGIC AND THE JUST-AS-MAGICAL POWER OF SISTERHOOD AND FRIENDSHIP. IN THE END, LITHA AND YULE CELEBRATE THE CHAOS OF BEING TEENAGE TWIN WITCHES WITH A COMPROMISE – A BELATED BIRTHDAY BASH NO ONE WILL EVER FORGET.

SIDE QUESTS!

THROUGHOUT LITHA AND YULE'S JOURNEY TO DEFEAT CHAOS AND DISPEL PUMPKIN GROVE'S CREEPY EVIL TWIN THEORY, THEY ALSO ENCOUNTER A MYRIAD OF COLORFUL CHARACTERS AND GO ON LOTS OF EXCITING SIDE QUESTS:

- THEY MEET LEANAN, THE DECEPTIVE IDEA FAERIE WHO STEALS WITCHES' INSPIRATION.
- THEY REUNITE THE TOWN'S VETERINARIAN, JETT, WITH HIS OWN FAMILIAR, INKLING, WHO RAN AWAY TO JOIN CHAOS.
- THEY CELEBRATE THE SOLSTICE WITH THE OAK KING AND THE HOLLY KING, WHO ARE LOCKED IN AN ETERNAL DANCE BATTLE THAT CONTROLS THE SEASONS.
- THEY EVEN VISIT THE LAND OF THE IN-BETWEEN TO CONSULT THEIR ANCESTORS AND LEARN THAT DEATH ISN'T THE END, IT'S MERELY THE BEGINNING OF A MYSTERIOUS NEW CHAPTER...

the TWINS



meet **LITHA**
IF YOU ASKED her,
SHE'D SAY SHE'S
the MAIN CHARACTER

meet **YULE**
SHE WOULD NEVER
want to be the
MAIN CHARACTER

LITHA

-vs-

YULE

SHINES in
the SPOTLIGHT ✓

DANCES
with a her COVEN
in THE MOONLIGHT ✓

CHARMES the
HATS off every
WITCH IN THE
ROOM ✓

TAKES TWINSHIP
VERY SERIOUSLY ✓



HAS CRIPPLING
STAGE FRIGHT ✓

RECHARGES
with a good SPELLBOOK
by CANDLELIGHT ✓

ADDES
STRUCTURE to
any ADVENTURE ✓

JUST NEEDS her
SPACE ✓

YULE



whose SKULL
is THAT?!

I'M JUST
OVERTHINKING
things again.

DARCY

her RECLUSIVE
SPIDER FAMILIAR
IS ALWAYS YULE'S
SARCASTIC voice
of REASON



SOUNDS
ABOUT
RIGHT.

TINY HAT



spell GOING exactly
ACCORDING to PLAN



HER ROOM
is in the
BASEMENT

LITHA

MAGICAL MAYHEM!

EDGAR
her IMPUSIVE
BAT FAMILIAR IS
ALWAYS UP FOR
LITHA'S MISCHIEF

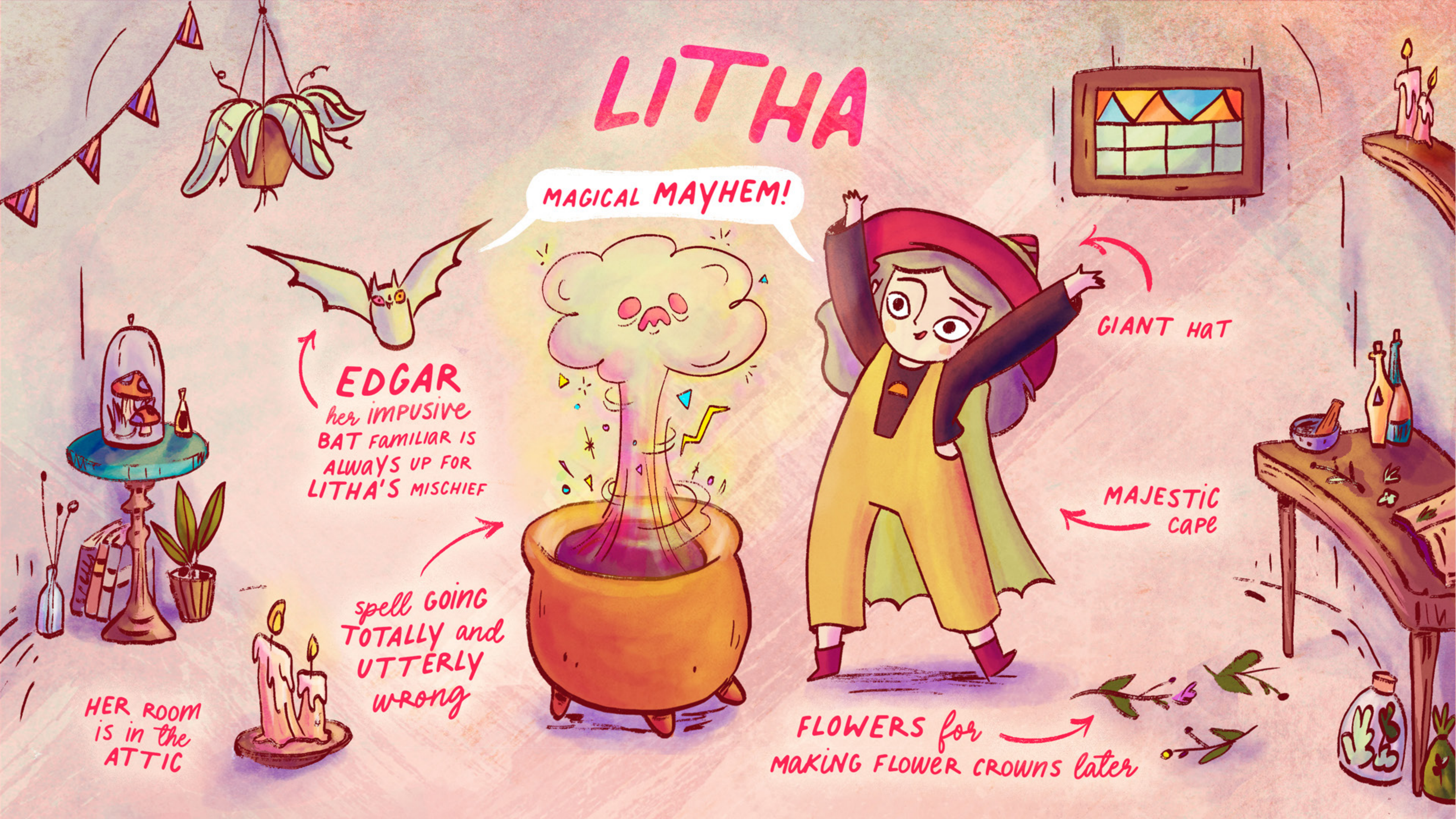
spell GOING
TOTALLY and
UTTERLY
WRONG

GIANT HAT

MAJESTIC
CAPE

FLOWERS for
MAKING FLOWER CROWNS later

HER ROOM
is in the
ATTIC



GEENA

The TWINS' MOM

WORKS AS A FORTUNE TELLER AT FORTUNE FAVORS

GROUNDING, INTUITIVE, and TRUSTS HER GUT

HER CRYSTAL BALL SEES SOMETHING OMINOUS in the TWINS' FUTURE



CAT

GEENA'S UNFLAPPABLE BUTTERFLY FAMILIAR HELPS HER Find Calm when DARK PREMONITIONS CAUSE HER TO WORRY



PIERCE

SPOOKY
INGREDIENTS!

WOLFGANG

PIERCE'S LOYAL
SOUS-CHEF and WOLF FAMILIAR
who IS A VERY GOOD BOY AND
100 PERCENT VEGAN

The TWINS'
DAD

OWNER and
HEAD chef at GEMINI
RESTAURANT

HE has HIS HEAD
in the CLOUDS, IS
EASY GOING, and
LONGS to TRAVEL

SOMETHING
MAGICAL
IS BREWING!



CHAOS

THIS WITCH
IS ALSO A TWIN.
AN EVIL TWIN!



WAIT - A HAT
WITH TWO POINTS?
WHAT'S UNDER
THERE?!

A MANIACAL
UNHINGED
LUNATIC

WITH
SEEMINGLY
LIMITLESS
POWER

BANISHED FROM
ELSEWITHER
FOR STEALING HER TWIN
SISTER'S MAGIC



AND THIS IS
HER SLY FOX,
VEX

COSMOS

CHAOS'
TWIN SISTER

The
Favorite
Child

CHAOS
HATES
THIS

Head Witch
of her Coven

AND
THAT!



Her swift and
devoted Gazelle,
Beacon

radiates
ORDER and
Harmony

THIS REALLY
DRIVES CHAOS
CRAZY

BADDIES



LEANAN

A TRICKSTER FAERIE WHO FEEDS ON THE IMAGINATION OF HER VICTIMS, LEAVING THEM FEELING DRAINED AND UNINSPIRED.

INKLING

A GHOST CAT WHO BROKE HIS FAMILIAR BOND WITH HIS WITCH IN ORDER TO SERVE CHAOS.



SERVITORS

EVIL BEINGS CREATED FROM CHAOS' MAGIC AND BOUND TO THE WILL OF THEIR MAKER. THEY WREAK GENERAL HAVOC ON THE WITCHES BUT HAVE NO MEMORY OF THEIR MISSIONS.

CHIMERA

A HYBRID BEAST CREATED FROM A BOTCHED SPELL, SHE CONTAINS THE WORST TRAITS OF THE WITCHES WHO MADE HER AND HAS A SERIOUS PROBLEM WITH THEM.



LOCATIONS



our story takes place in
The magical world of

ELSEWITHER



WELCOME
To
PUMPKIN GROVE
LITHA and YULE'S village



their MOM is a
FORTUNE TELLER

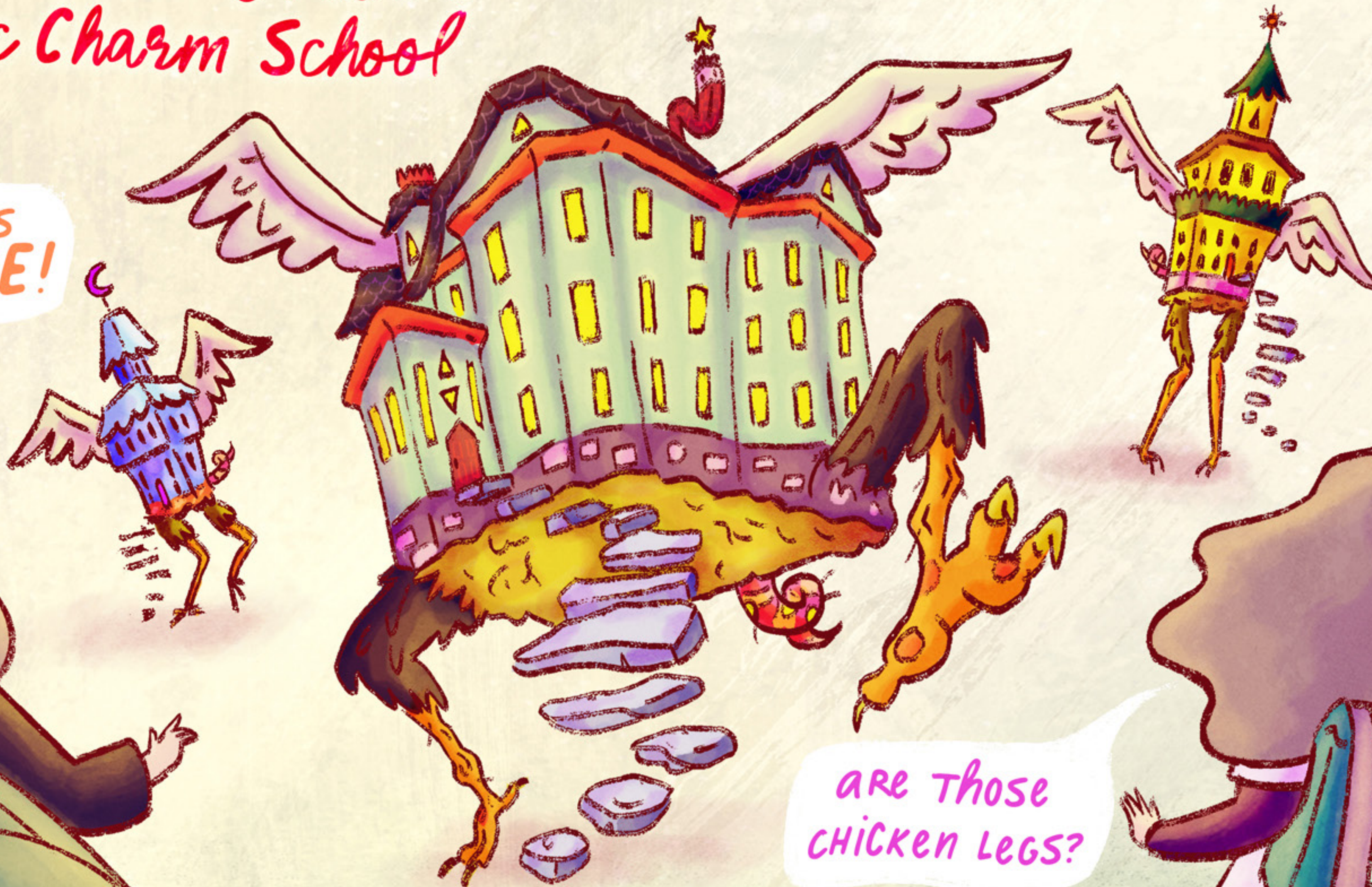


their DAD OWNS
GEMINI RESTAURANT



PUMPKIN GROVE Public Charm School

OUR SCHOOL IS
TOTALLY ALIVE!



are those
CHICKEN LEGS?



The WITCHES BREW

apothecary & cafe

one KARMA LATTE comin' your way!



A PLACE WHERE LITHA and YULE CAN GO TO READ SPELL BOOKS, TRY TINCTURES, and HANG OUT WITH THEIR COVEN AFTER SCHOOL.

adventure awaits in

THE DARK DARK WOODS



AMONGST
OTHER
THINGS...

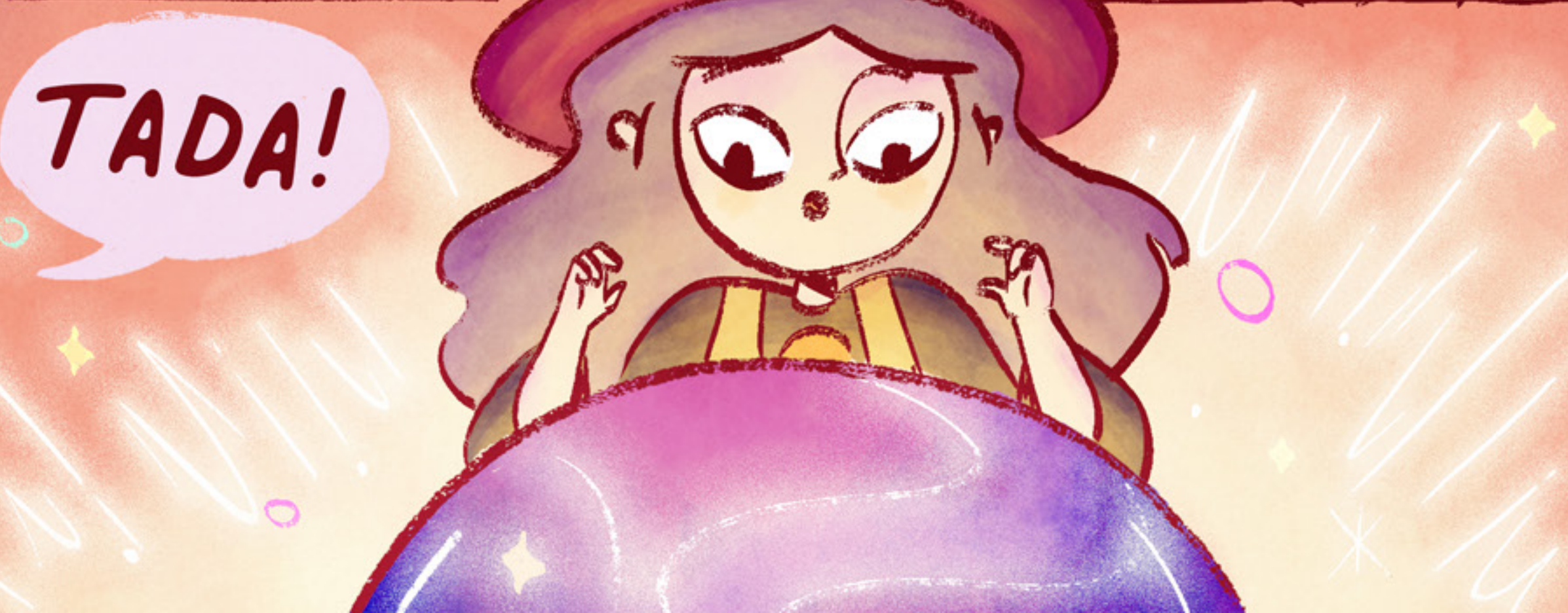


LITHA AND YULE'S HOUSE

PARENTS' ROOM

LITHA'S ROOM

YULE'S ROOM





IT'LL BE AN INTIMATE SÉANCE WITH OUR CLOSEST FRIENDS.



WE'LL HAVE CANDLES.



COCOA.



THE GHOSTS OF ANCIENT LIBRARIANS.

IT'S GOING TO BE -

BORING!

SHHH!



YOU'RE BORING.

YOUR BOOOOKS ARE OVERDOOOO.



very original.



BUT YULE!
THIS IS THE
DAY WE GET OUR
FULL POWER.



IT HAS TO
BE EPIC!

WITH
FIREWORKS!

AND
DANCING!

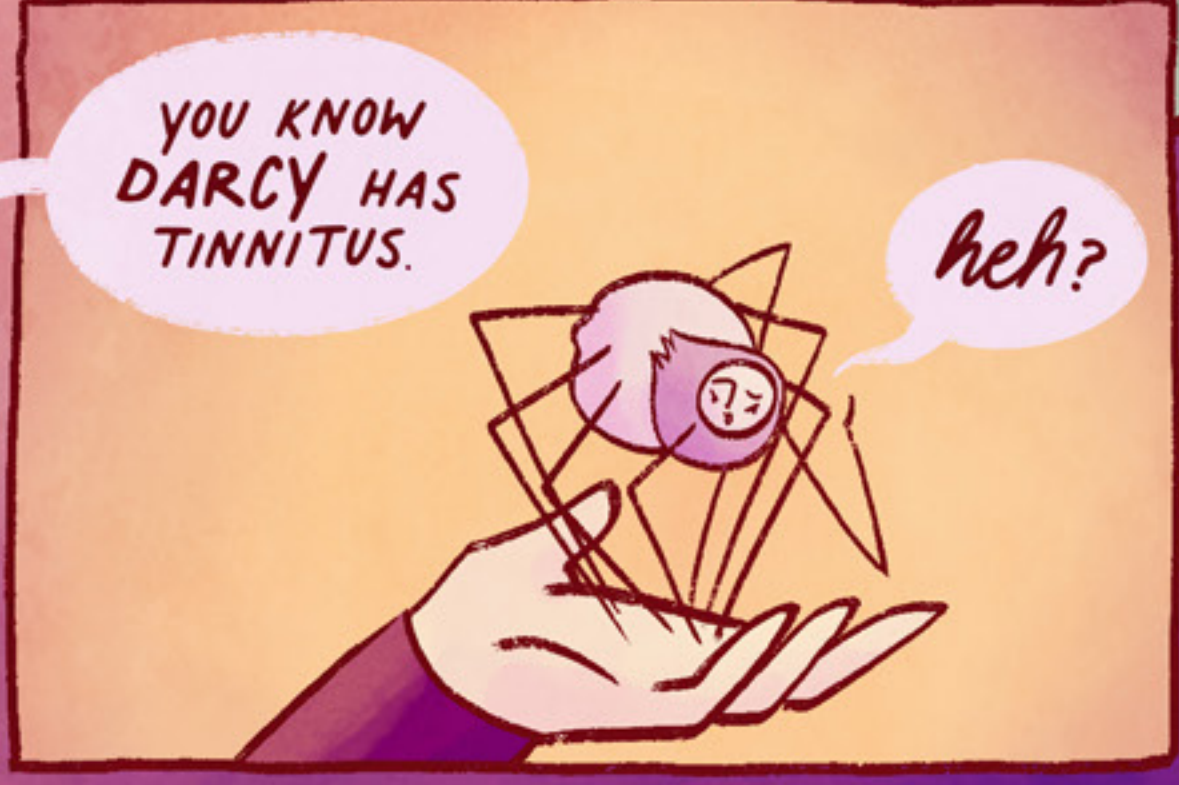


AND A
LEVITATION
LOUNGE!

SOMEONE
CALL EARTH,
AIR, AND WATER
CUZ THIS PARTY
IS FIRE!



THAT ALL
SOUNDS VERY
LOUD.



YOU KNOW
DARCY HAS
TINNITUS.

heh?



MY PARTY WILL BE
SO COZY AND
SOPHISTICATED.

OH LITHA, AS A
13-YEAR-OLD WOMAN,
I NO LONGER CARE
WHAT OTHER PEOPLE
THINK OF ME.

BUT MY PARTY WILL
BE THE TALK OF THE
TOWN FOR THE REST
OF THE YEAR!

MY PARTY WILL
SHOW EVERYONE
AT SCHOOL HOW
COOL WE ARE!

NEITHER
DO I!



they BOTH
care.

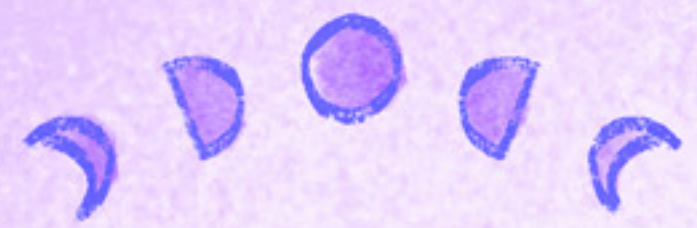
OH, 100
PERCENT.

WELL, MAYBE
I'LL JUST DO MY
OWN THING.



The **CREATORS**

JOY BURAN + NOELLE MELODY ARE THE ARTISTS BEHIND JINX. THEY ARE NY-BASED ILLUSTRATORS, ANIMATORS, AND, AS IT HAPPENS, TWINS. THEY BOTH STUDIED MEDIA ARTS AT PRATT INSTITUTE WHERE THEY JOINED FORCES ON THEIR THESIS FILM, WHICH WENT ON TO RECEIVE NUMEROUS FESTIVAL PRIZES WORLDWIDE AND HIT OVER 1 MILLION VIEWS UPON ITS ONLINE RELEASE. SOON AFTER GRADUATING, THEY OPENED THEIR OWN ANIMATION STUDIO AND HAVE SINCE DIRECTED SEVERAL AWARD-WINNING SHORTS, MUSIC VIDEOS, AND COMMERCIAL PROJECTS TOGETHER. THEIR SELECT CLIENTS INCLUDE NETFLIX, HULU, CARTOON NETWORK, NICKELODEON, AMAZON STUDIOS, AND SESAME STUDIOS. JOY AND NOELLE MOST RECENTLY WORKED AS ANIMATION DIRECTORS ON CARTUNA'S ANNIE-NOMINATED SERIES "HUMAN KIND OF" FOR FACEBOOK WATCH, CREATED BY **DIANA MCCORRY** (THEIR WRITING PARTNER IN CRIME FOR JINX)! THEY DRAW THE PICTURES, SHE WRITES THE WORDS.



AWESOME STUFF ABOUT US!

The **WRITER**

DIANA MCCORRY IS A WRITER, DIRECTOR, PRODUCER, ANIMAL LOVER, AND SCIENCE FICTION FAN BASED IN LOS ANGELES. DIANA CREATED AND WROTE "HUMAN KIND OF", FACEBOOK WATCH'S ANNIE NOMINATED ANIMATED SERIES, AND CO-WROTE TAMMY'S TINY TEA TIME, WHICH PREMIERED AT THE 2018 SUNDANCE FILM FESTIVAL. HER STORIES FOR THE TRUTH PODCAST HAVE EARNED HER A SARAH LAWRENCE INTERNATIONAL AUDIO FICTION AWARD AND TWO HEARSAY AUDIO PRIZES, AND HAVE BEEN FEATURED IN THE NEW YORK TIMES AND ON NPR'S SNAP JUDGMENT. SHE LOVES SPACE, MONSTERS, AND ABOVE ALL, SPACE MONSTERS. SHE HOPES TO DIE HAVING WRITTEN A PIECE OF SPECULATIVE FICTION FOR EVERY MEDIUM IN THE KNOWN UNIVERSE. ASK HER ABOUT THE TIME SHE MADE HER MOM DRIVE HER TO ROSWELL.

MIGHTY  OAK

The
TEAM

MIGHTY OAK IS AN EMMY-NOMINATED, WOMAN AND QUEER-OWNED ANIMATION STUDIO BASED IN NEW YORK CITY THAT SPECIALIZES IN STOP MOTION, 2D, 3D, AND MIXED MEDIA. ALONG WITH OUR AWARD-WINNING WORK FOR NETWORKS LIKE NETFLIX AND HBO, OUR COMMERCIAL PROJECTS HAVE GARNERED OVER 5 BILLION VIEWS ACROSS VARIOUS PLATFORMS, EARNING US A SPOT ON FAST COMPANY'S LIST OF MOST CREATIVE PEOPLE IN BUSINESS (TWO SPOTS BELOW MICHELLE PFEIFFER). OUR FIRST ORIGINAL SHORT FILM, UNDER COVERS, PREMIERED AT SUNDANCE.